

Instruction Sheet P/N 606C

Water Proof Strain Relief

Package to include: 1/2" MNPT Strain Relief,
O-Ring, and
Hub Nut



Commercial & Industrial UL 515 Type A,B,C,D
Ordinary Locations – 75C wet, 150C Dry LR102162-2
On metal and nonmetallic pipe and vessels – 3A, 3B, 3C
In metal and nonmetallic pipe and vessels – 4A, 4B, 5A, 5B
wet location industrial MAX 25 AMPS

1. Install wire as shown in the Arctic Trace[®] Installation Instructions.
2. Disassemble pressure connector body and first slip male threaded body over Tefzel outer jacket.
3. Assemble connector body, rubber grommet and cap as shown. **Do not over tighten.**
4. Connect 606C into junction box or conduit using O-Ring for non-threaded water proof connection or 1/2" MNPT for water proof threaded connection. Use hub nut as needed.

Caution

***Do not use this fitting with
TL or CW series heat trace.***

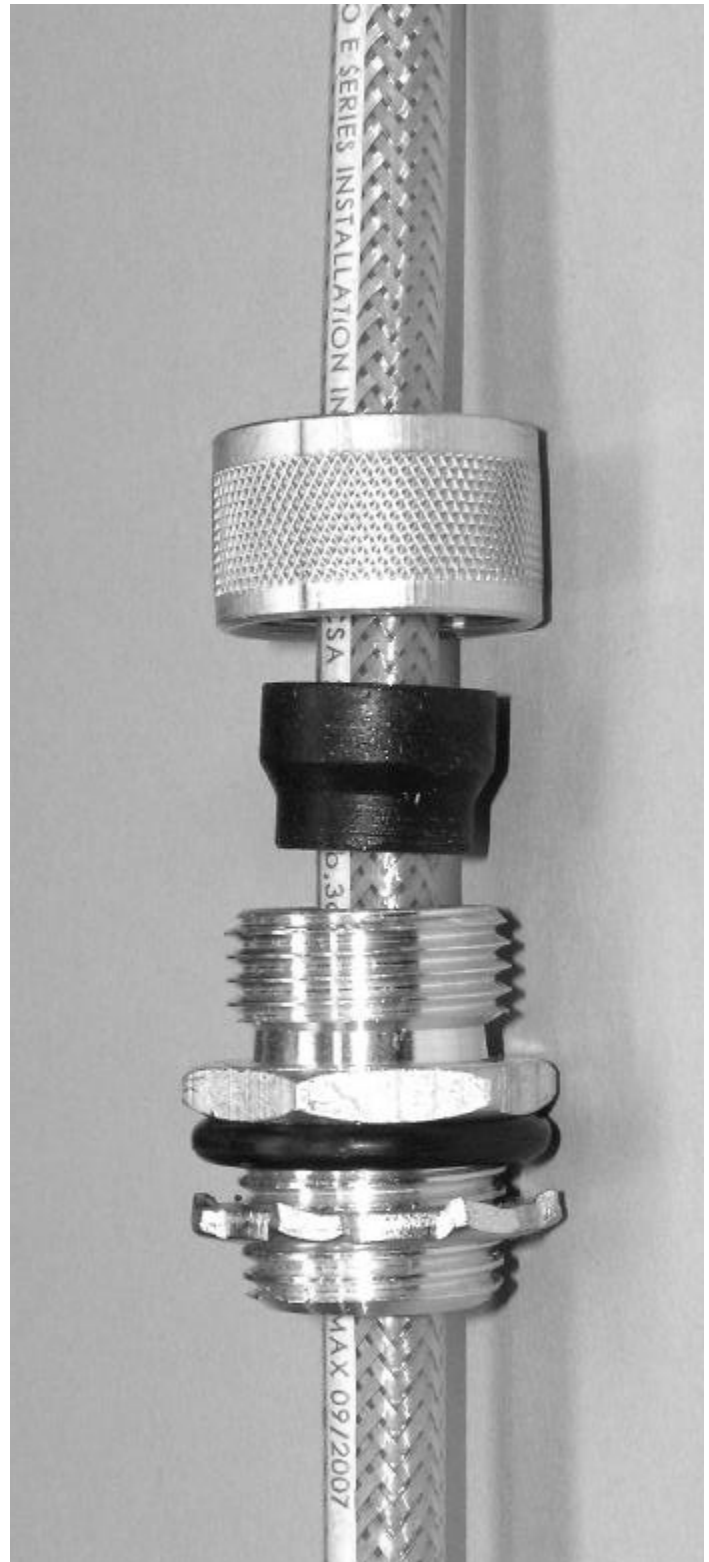
Caution

This product must only be installed by a qualified electrician, who fully understands electrical equipment placement, and must never under any circumstance be placed in service without the use of an adequate ground fault circuit interrupter to protect personnel from shock or injury.

After this equipment has been placed in service it must be tested to ensure all wiring and safety devices are working.

All National, State, and Local Electrical Codes must be followed.

If this product is not installed properly fire, death, or injury may result.



One Year Limited Warranty

du Alaska hereby warrants to the original purchasing consumer that its Arctic Trace heating cable is free from defects in material and workmanship for a period of one (1) year from the date of original installation. du Alaska's obligation under the terms of this limited warranty shall be limited to repairing or replacing, at du Alaska's option, free of charge, F.O.B. from its factory, any part or parts of the Arctic Trace heating cable which in its sole judgment is found to be defective; and providing further that the claim be made within one (1) year from the date of original installation and said part or parts be returned as directed by du Alaska at the time the claim is made.

This warranty applies to installations in the open ambient air. The warranty shall also apply to installation in clean water under a pressure of no more than 200 PSIG if the heat seal cap has been sealed to the wire by hot air gun welding in such a manner that no leak exists between the heat seal cap and the able Tefzel cover. No warranty whatsoever exists in any other installation or manner of installation.

All information concerning the product supplied by du Alaska is furnished upon the express condition that the customer shall make its own assessment to determine the product's suitability for a particular purpose.

WARRANTY EXCLUSIONS. *Except as expressly stated herein and to the fullest extent permitted by law, we shall not be liable for direct, indirect, incidental, consequential or other types of damages arising out of resulting from the purchase or use of the product. This Limited Warranty is in lieu of all other warranties, express or implied, specifically including, but not limited to, implied warranties of merchantability or fitness for a particular purpose.* The remedies under this warranty are only as set forth herein (except as to the extent they are required by any applicable laws) and du Alaska neither assumes nor authorizes anyone to assume for it any other obligations. Some states do not allow the exclusion or limitations of incidental or consequential damages, so the foregoing limitations or exclusions may not apply to you. In such states, liability shall be limited to the extent allowed by state law. We do not warrant this product against normal wear and tear, unauthorized modifications or alterations, improper use, improper maintenance, accident, misuse, negligence, theft, loss or damage from outside causes.

du Alaska Incorporated
6706 Greenwood Street
Anchorage, Alaska 99518

Phone: (907) 522-3004

Fax: (907) 349-1023

E-mail: dualaska@alaska.net

www.arctictrace.com